

# Sunflower Summit



## Kansas 2023



Alpha Delta Kappa

Alpha Delta Kappa builds Educational Excellence, Altruism and World  
Understanding through fellowship.

## Third Sunflower Summit Program with MORE!



### 8:30 **REGISTRATION**

Continental Breakfast

Opportunity Areas:

Beta Chapter Historian's Book Display, Raffle Baskets,  
State & Chapter Ways and Means Tables, Photo Op\*

### 9:15 **OPENING SESSION**

Welcome – Presiding **Joyce Perkins**, KS President-Elect

Presentation of Colors / Pledge of Allegiance

Boy Scouts of America Troup #1321

Thought for the Day – **Andrea Henne**, KS Chaplain





Greetings – **Travis Riebel**, Director [pictured]  
Hutchinson Career & Technical Education Academy  
DECA Presentation—**Clayton Evans**, Advisor



Introduction of Special Guests – **Marla Hayden**, KS President  
Regional Greetings from **Rachel Shankles**, RP SCR



“Greetings, Kansas Sisters,  
I hope your sunflower Summit is as successful as always with lots of fun, fellowship and learning sessions. I will be attending my granddaughter’s graduation from high school, but one day I’ll make it to the Summit. I’ve heard so many good things about it. Have fun and see you in KC soon!  
Hugs,  
Rachel Shankles”

#### Kansas Officers:

Marla Hayden– **President**  
Joyce Perkins- **President-Elect**  
Susan Carden- **V P for Membership**  
Cheryl Sigel - **Immediate Past President**  
Linda Johnson - **Recording Secretary**  
Connie Ronck - **Communications**  
Barbara Corder - **Treasurer**  
Kathy Saving - **Archive Specialist**  
Valerie Nordberg-**Sergeant-at-Arms**  
Ande Henne - **Chaplain**

#### Kansas Committee Chairs

Karla Kreutzer- **Altruism - with:**  
Nancy Thompson- **Alzheimer's Longest Day**  
Karol Kenzy- **St Jude's Children's Hospital**  
Linda Parker - **State University Endowments**  
Judy Welter - **World Understanding**  
Dorothy Hoyt-Reed - **Recognitions and Rewards with:**  
Ruth Akins - **State Scholarship and**  
**Excellence in Education**  
Joyce Perkins - **Budget-Audit/Finance Chair**  
Marla Hayden-**Newsletter editor/creator & Webmaster.**

#### 2023 State Scholarship—**Ruth Akins**, KS Scholarship Chairman



Karla Kreutzer is the winner of the 2023 scholarship for her to continue her project on Wheat Science and Bread Making with students.

## ALTRUISM-Karla Kreutzer, KS Chair

Wichita-State Presentation – **Linda Parker**, KS Endowment Chair

World Understanding CHEAR Presentation –**Judy Welter**, KS Chair

Alzheimer's Longest Day Event – **Nancy Thompson**, KS Chair

St Jude's Childrens Hospital– **Karol Kenzy**, KS Chair

Ways and Means – **Karen Spratlin**, KS Chair



# Check out the donations by reading more!



## **ALTRUISTIC ENDEAVORS @ the Summit**

### **Wichita State University Endowment**

Wichita State is the sixth state university Kansas Alpha Delta Kappa will endow with a scholarship. We began this drive in May of 2018 and currently have approximately \$5,000 in the foundation. We need \$35,000 to endow. Please purchase a raffle ticket to make a yearly scholarship available for a woman education major at Wichita State.

### **2021-2023 World Understanding Project**

Alpha Delta Kappa members selected Project C.H.E.A.R. as the World Understanding project for 2021-2023 biennium. Over 1,000 chapters are committed to raising \$50,000 to support the project. Project C.H.E.A.R.'s mission is to empower disadvantaged children and youth in Babati, Tanzania, through education. Project C.H.E.A.R. is the only service of its kind in a region of 1.4 million. The money will be used to build dormitories, classrooms, a library/media center, a kitchen and offices. There will be an area for gardening and fruit trees. and the adjacent property will make a great play area. This project aims to free children from a life of poverty.

### **Alzheimer's Longest Day Event**

This event symbolizes the challenging journey of those living with Alzheimer's and their caregivers. Please donate to support Alzheimer's research and development. Alzheimer's will strike 1 of 10 Americans over the age of 65.

### **St. Jude Children's Research Hospital**

Has eight affiliate clinics across the US that can offer much of a child's care closer to his/her home. The doctors and staff at these sites work with the St. Jude team to deliver state-of-the-art care and innovative clinical trials. Since June 1986, when members, chapters, and states/provinces/nations started sending their contributions for St. Jude Children's Research Hospital to International Headquarters to be recorded and forwarded. The mission of St. Jude Children's Research Hospital's International Outreach Program is to improve the survival rates of children with catastrophic illnesses worldwide, through the transfer of knowledge, technology, and organizational skills. Eighty-five cents of every dollar received supports the research and treatment at St. Jude Children's Research Hospital.

### **Summit Altruistic Project** **BrightHouse**

BrightHouse services keep survivors who have experienced domestic violence, sexual assault, and human trafficking safe through their crisis line, emergency shelter, safety planning, legal advocacy, supervised parenting time, and links to community resources. All services are available in English and Spanish. They will also work with those who need other languages through the use of interpretation services. BrightHouse serves *Reno, Rice, Kingman, and Harper Counties*. Checks may be made out to BrightHouse. Dillon's, Visa, and McDonald's gift cards may also be donated. McDonald's gift cards are especially appreciated by the kids!

## BUSINESS

2nd Sunflower Summit (2019) - **Barbara Corder**, KS Treasurer  
Roll Call of Chapters – **Linda Johnson**, KS Recording Secretary

Beta	6	Upsilon	3+1
Epsilon	2	Alpha Alpha	2
Iota	2	Alpha Gamma	1
Rho	6	Alpha Rho	6
Theta	2	Beta Epsilon	7
Sigma	2		

Introduce Session Presenters– **Cheryl Sigel**, KS Past Pres

### Break-out Session Presenters

*Thank you for enhancing  
our knowledge  
With informative presentations.*

Barb Corder	Alpha Gamma
Joyce Perkins	Beta Epsilon
Karla Kreutzer	Rho
Kathy Saving	Beta Epsilon
Linda Johnson	Upsilon
Marla Hayden	Rho
Valerie Nordberg	Rho

### ***Creating Comfort with Fidget Aprons.***

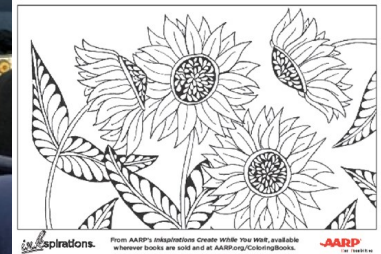
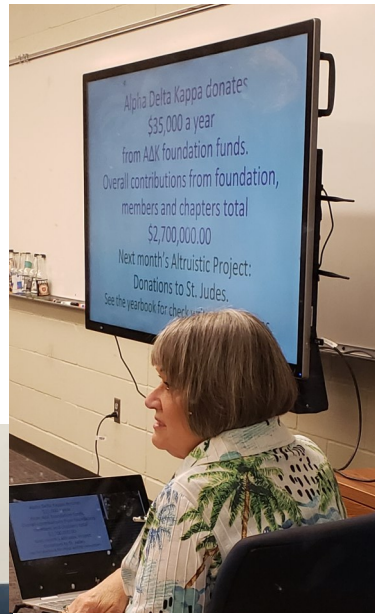
Led by Kathy Saving and Joyce Perkins, Beta Epsilon





***An Inside Look at St Jude Children's Research Hospital. Led by Barb Corder, Alpha Gamma.***

***Easel Calendar Card.***  
Led by Valerie Nordberg, Rho.



***Color Karma 2.*** Led by Marla Hayden, Rho

***Wheat Science and Bread Making.***  
Led by Karla Kreutzer, Rho



***CASA: Volunteers Who Stand up and Speak out to Help Abused and Neglected Children.***

Led by Asst Dir Wiebe and Linda Johnson, Upsilon

### ...Ronald McDonald House— TABS TABS and MORE TABS!

**KARLA** —One of Kansas' altruistic projects we support is also celebrating a milestone of reaching 40 years, Ronald McDonald House. There are many levels of giving, and we chose to save tabs from cans. Each chapter may choose to deliver to a RMH near them or bring to this event [then State] to have the Altruism Chair deliver to the RMH in Wichita. All I need is a notification of how many pounds were delivered. Rho Chapter just delivered 206.1 pounds of tabs. RMH responded with a thankyou letter I will now read:

*On the day he turned 20 months old, Jacob, who was fighting a serious illness, was also spending his 179th day in the hospital far from his home. Thanks to Ronald McDonald House Charities Wichita, Jacob's parents stayed conveniently close to the hospital—so they could be by their son's side at a moment's notice.*

*Jacob's father praises the "home-away-from -home" they found at our Ronald McDonald House. He calls it a sanctuary - a place where the family was able to stay together and stay strong - so they could focus on getting Jacob well.*

*Your support gives kids like Jacob a way to be with their family - and a better chance at healing faster so they can go home.*

*We are incredibly grateful for your kind donation to Ronald McDonald House Charities Wichita. Your generosity helps us continue our important mission of providing care and comfort to families in need.*

*Susan J Smythe, CEO      Keeping Families Close ™*



RHO Chapter gave over 200 Pounds of Tabs this year.





## 11:30 SPEAKERS

**Susan Carden**, KS Vice President for Membership

**Sue Wray**, BrightHouse Director -Summit Altruistic Project



**SUSAN** Can't tell you how happy I am to be here and to have the Sunflower Summit in my hometown. First, I would like to thank all of our chapters for the efforts you've made toward your goals on your Chapter Needs Assessment. I have recently visited with five of our chapters about their progress, and I'm very impressed with the creative efforts I've seen so far. International has requested that I speak with each chapter about their Chapter Needs Assessment progress so if we haven't spoken yet, please contact me as soon as possible.

We currently have eleven chapters. We would love to add more. We are working to add a chapter in Baldwin City, Kansas. Lindsborg, Kansas or somewhere in the Salina area is another possibility. If you know a teacher living in or around that area, please contact me. If you have any ideas about other locations where we could start a new chapter, please let me know.

We are in the process of starting our first Kansas Alpha Delta Kappa Collegiate Club at Baker University in Baldwin City where three of our founders attended. We have an advisor who is chair of the department of education undergraduate programs. They have written their Constitution and the Alpha Delta Kappa International Collegiate Club Board has approved it. The Student Senate has given approval for there to be a club at Baker. We are currently planning an informational meeting that will take place as soon as the students return for the Fall Semester. Our hope is to have the charter, initiation, and installation of officers ceremony in late fall.

Collegiate Clubs may be a way to help ensure the future of Alpha Delta Kappa by transitioning collegiate club members into our chapters. We can have more than one collegiate club in the state, so if you live near a college or university with an education program, and you think someone on their staff might be interested, please let me know.

Call, text, or email whenever you need something. If you can't find me, I'll be dragging Main Street in Hutchinson, Kansas reliving the days of my youth.

Kansas is unique in that we are the home of the first Alpha Delta Kappa chapter. We are small but mighty!! Let's use our strengths to help our membership grow!

**12:00 LUNCHEON & BLESSING by the Kansas Chaplain**  
**1:45 CLOSING SESSION**  
Omega Service – **Marla Hayden and Joyce Perkins**  
  
Speaker – **Marla Hayden**, AΔK KS State President



### **...Because You're My Sister...Together is Better**

Those with a sister have been richly blessed with a lifelong advisor and friend. AΔK provides us with the opportunities to celebrate sisterhood as we make and share memories. Along with hopes and dreams and fears—today we encourage and cheer each other forward and onward while brightening even the cloudiest day. Rarest gift is the sisterly love we share. It's worth replenishing and growing through new relationships we make and invite them to share our sisterhood.



**What** do we offer?—The opportunity to live our life with on-purpose fulfillment not letting life move on accidentally. This purpose driven through altruistic endeavors provides a sense of fulfillment.

**Leadership**= we all share in the role of leadership. You display that by attending events such as this. You lead by taking care of others, giving service to others. With good leadership we feel like we work for each other and join together as we share in obtaining the mission and vision and goals.

**Let's** talk about change—We face change everyday...change can come in small doses you may not be aware of or large life changing events. What's consistent is the power of sisterhood in knowing what we stand for. We achieve more when we chase the dream. We have purpose and cause. I am a process driven person—I am always looking forward and do not make change happen unless future leaders show they agree with the change and will sustain it moving forward.

**Vision** is like a dream—it will disappear unless we do something with it. It takes courage to imagine the life of an organization with the change. With the sister feedback from within Kansas, within SCR, within International...they provide the EXBD+ with the courage to keep going.

**Each** of us has a sense of vision for the future. Could be the same or different. If we like the vision, then we choose to follow. The vision becomes ours and we can use it to navigate our choices. It becomes the followers who bring the vision to life. You can see the work towards the vision every time one reads chapters' activities/accomplishments in the state newsletter.. We have a lot to share with each other about celebrating altruism and sisterly love.

I take pride when I tell you those good deeds are being noticed by other states, regions, and internationally. Remember the newsletter is Yours not Mine. I only document what you share and you are sharing many wonderful moments.

**Choose** to commit ourselves to ensuring that our sisters love coming to "work". Our "work" becomes helping them find their calling. That act of service not only changes the way our co-sisters feel about their jobs; it actually changes the way we feel about ourselves. The act of service is called leadership.

I am the facilitator—when you get 'promoted' to a position of leadership—we are no longer responsible for doing every job, we are now responsible for the people who do that job.

**Leadership** takes time. It involves letting go of "doing" everything to training people, coaching people, believing in people and trusting people to take over and accomplish those jobs. and. It goes beyond an 8 hour day. The joy of leadership for me, comes from

- ◆ Seeing someone, on our team, achieve more than they thought they were capable of.
- ◆ When we see our team come together to solve an impossible problem.
- ◆ When a team forms deep bonds of trust and would do anything to help others out.

It's amazing to help others find their success. I don't have to know all the answers. And when I don't, I don't have to pretend that I do. There are many sisters who want [and do] help.

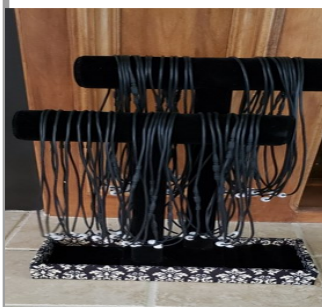
Remember.....Because You're My Sister...Together is Better  
It doesn't matter when we start.—It doesn't matter where we start.  
All that matters is that we start and start with your passion for AΔK .  
And help Drive the DREAM!





**RECOGNITIONS & CELEBRATIONS** — Joyce Perkins, Marla Hayden

Pearls—Add a pearl to your necklace:



- Registered for Sunflower Summit and/or International
- Wearing Badge and/or Pearls
- Received a scholarship/grant
- Retired from Education
- Discussed membership
- Current officer for State/Chapter/International
- Received a Membership Certificate
- 1st Time Attendee
- Wearing a Sorority Themed T-Shirt



The Gifts of Gratitude Grant was an Awesome opportunity to share information about ADK with prospective members. International awarded \$50 to purchase purple kisses and sent informational brochures to the chapters who applied. Iota, Rho, Beta Epsilon, and Epsilon chapters received the grants. Upsilon applied but did not receive a grant. They decided to do it on their own without financial support from International.

**4 CLASSROOM GRANT winners receive \$400 each—**

**Iota Karen Nelson-** purchased Legos for writing activities

**Iota Sandi Armbruster-** purchased materials for learning centers

**Rho- Karla Kreutzer-** Wheat Bread mixed with Science for 3rd, 4th, and 5th graders

**Beta Epsilon —Shelby Burnett**

**INNOVATION GRANT** receives \$300 **Iota — Kelsey Chandler**

**2022 KANSAS WOMAN OF DISTINCTION- RHO- Joyce Schneider**

**ADDITIONAL RECOGNITIONS—— [sourced from the member registration form]**

Kansas Master Teacher nominee —**Sigma Jamie Swindler...**

2022 SCR presenter AND 50 Year member— **Alpha Alpha Nancy Medina,**

2022 SCR presenter—**Rho Marla Hayden**

SCR-PE named — **Alpha Alpha Nancy Thompson-**

**\*State Alzheimer's chair- 2022 Longest Day-KS 6<sup>th</sup> place!**

2022 SCR presenter— **Alpha Gamma Karen Spratlin,**

50 years with sorority — **Alpha Gamma Lyla Hoyland**

Retirements from Education— **Rho Marla Hayden -**

**Upsilon Carol Moore and Linda Johnson**

**Beta Epsilon - Becca Hill and Tammy Potts**

**Beta Epsilon Dorothy Hoyt-Reed-** is excited to be back to teaching part time; teaching 2 classes of stained glass at the Lawrence Art Center; proud great grandmother of 2 gorgeous girls

**Rho Karla Kreutzer-** 40th year teaching in the Catholic Diocese of Wichita

**Rho Connie Ronck-** 31 year member

**Beta Dixie Westervelt -** 2022 Kansas Hospice Volunteer of the Year

**Beta Epsilon Pat Wolf -** received a Lifetime Achievement Award for Volunteerism from President Biden. —for hours of altruism







# Our Founders

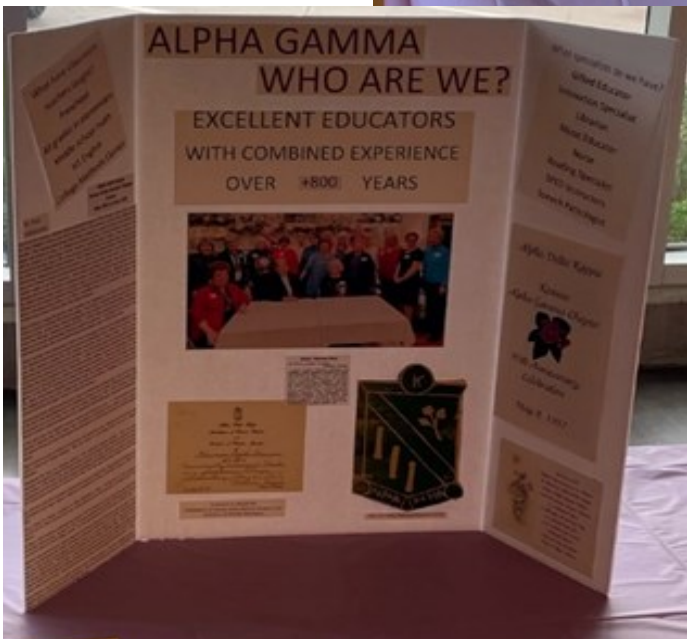
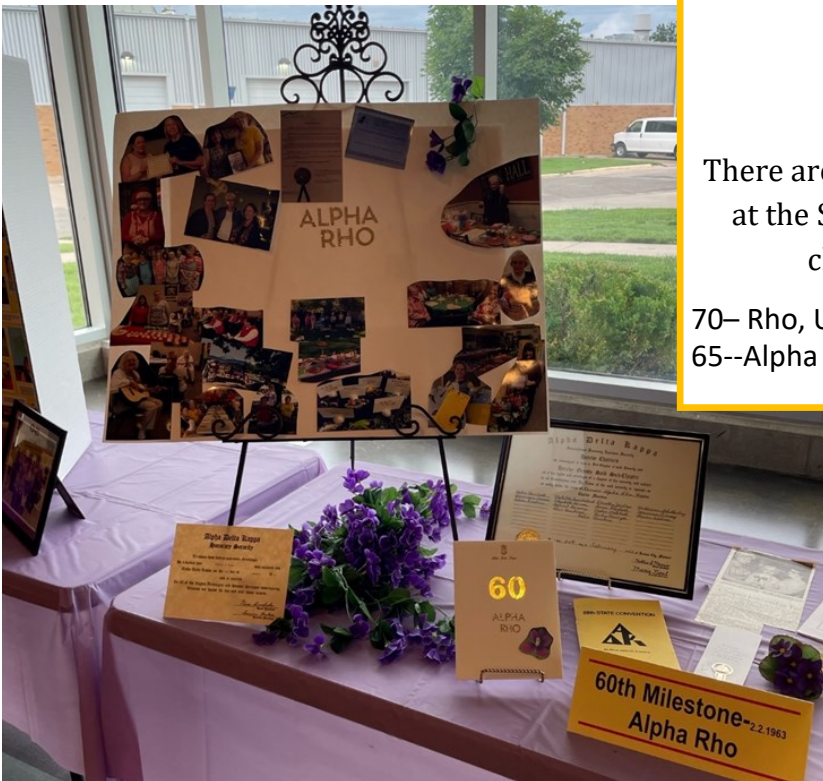




## NEW Chapter Milestones

There are 7 chapters who celebrate major milestone at the Sunflower Summit this year. Each chapter chose to share in the celebration too!

70— Rho, Upsilon, Sigma, Alpha Alpha  
65--Alpha Gamma 60—Alpha Rho 50 —Beta Epsilon







## NEW Chapter Spotlight

DID you know every chapter has a story to share? Believe it, we know it to be true! The story may be about overcoming obstacles, fantastic program, altruistic project, volunteering, etc. This is the time to turn the spotlight on your chapter.

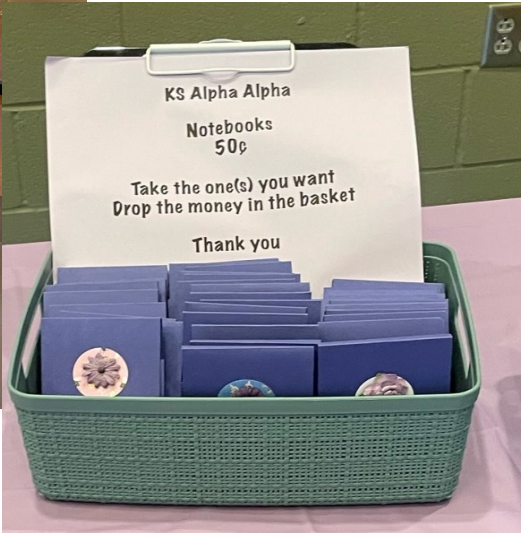




# Gift Baskets and Raffles are Great!





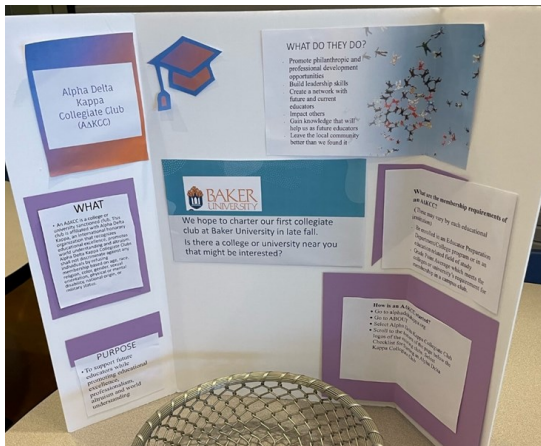


# Ways and Means



# How We Bring Altruism to Life!

<b>Altruistic</b>	Karla Kreutzer, Chair	
♥ Alzheimer	Nancy Thompson, Chair	\$ 393.00
♥ World Understanding	Judy Welter, Chair	\$ 155.00
♥ St Jude	Karol Kenzy, Chair	\$ 257.00
♥ WSU Endowment	Linda Parker, Chair	\$ 798.00
♥ BrightHouse	Ande Henne, Alpha Rho Pres	\$ 331.00
♥ Collegiate Club Jar	Susan Carden, KS VPM	\$ 225.00
<b>Ways N Means</b>	Karen Spratlin, Chair	
♥ Raffle Baskets	Gerry Coffman, Sigma Pres	\$ 819.50
<b>TOTAL</b>		<b>\$ 2,978.50</b>



*Thank you for attending the  
Third Sunflower Summit.*

*We're Goin' to Kansas City.*  
*Kansas City Here we come!!!*  
*SAFE TRAVELS Your*  
*Kansas Executive Board*

**Over 30 KS members are  
Registered!**



**KANSAS CITY MARRIOTT DOWNTOWN  
JULY 13-16, 2023**



**ALPHA DELTA KAPPA**  
INTERNATIONAL HONORARY ORGANIZATION FOR WOMEN EDUCATORS







## Kansas Chapters & Sisters

*All Chapters:* provide raffle baskets and items to make this a great Summit.

<b>Alpha Rho, Hutchinson</b>	Host Chapter: Venue, Breakfast, Lunch and Hotel Arrangements
<b>Alpha Alpha, Mission &amp; Beta, Atchison</b>	Donate Daytime Snacks
<b>Alpha Gamma, Johnson County</b>	Assist with Ways and Means & Altruism Tables
<b>Beta Epsilon, Basehor</b>	Registration, Registration Table and Name Badges
<b>Epsilon, Topeka</b>	Assist with Photo Op Area
<b>Iota, Miami County</b>	Table Decorations
<b>Rho, Wichita</b>	Place Setting Cards
<b>Sigma, Ottawa</b>	Help Ways N Means Chair with Raffle Baskets
<b>Theta, Kansas City</b>	Assisted KS Archivist, Kathy Saving with Display areas
<b>Upsilon, El Dorado</b>	Treats for the drive home
<b>Marla Hayden &amp; Joyce Perkins</b>	Lead Omega Service Design Program
<b>Cheryl Sigel &amp; Joyce Perkins</b>	Organized “Girl’s Night Out” Activities



# Girls Night Out

**Apron Strings Stop #1**

**Making Spiked Arnold Palmers**

**Pimento Cheese**

**Artesian Bread**







# Girls Night Out



**Airport Steakhouse**  
**Stop #3 / Next night**

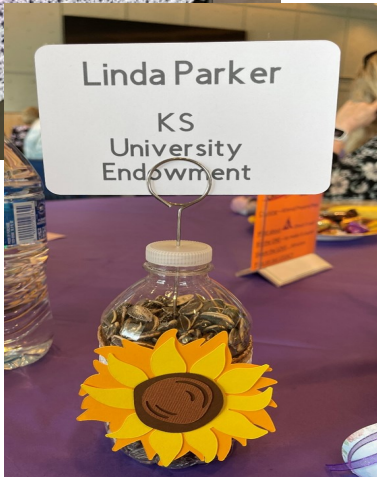




Registration Table  
with Photo Booth



Alpha Rho provided  
the 75th Celebration  
Cake for all to eat!  
Ande Henne, President



Linda Parker  
KS  
University  
Endowment





Nancy T showing new way to wear pearl necklace!  
Look Close :)







# Photo Booth



Chapters brought vintage items for props depicting accessories from 75 years ago!



Old Fashion Hat Box  
Walker's in Wichita







Boy Scout Girls with Parents/Siblings showing their support!. The girls headed to their camp afterwards.



The DECA experience starts in the classroom where students learn business concepts in preparation for college and careers. A powerful instructional component, DECA brings the classroom to life by empowering the teacher-advisor to make learning relevant with educational programs that integrate into classroom instruction, apply learning, connect to business, and promote competition. The successful integration of each of these four interconnected components, also part of DECA's guiding principles, results in a strong program that produces college- and career-ready students.

Thank you for supporting  
The Sweet Treat



The DECA Sweet Treat Student Store Workers . Both are Juniors and will be store managers next school year at Hutchinson CTE Academy.

HOT DRINKS		12oz	16oz
Americano			
12oz - 2 shots of espresso and Hot Water		2.00	3.00
16oz - 3 shots of espresso and Hot Water			
Latte			
Hot Choice of Syrup		3.00	4.00
Espresso Shot			
Steamed Milk			
Caramel Macchiato			
Vanilla Syrup		3.00	4.00
Steamed Milk			
Espresso Shot			
Mocha/White Mocha			
Vanilla Syrup		3.00	4.00
Espresso Shot			
Steamed Milk			
Cappuccino			
Hot Choice of Syrup		3.00	4.00
Espresso Shot			
Steamed Milk			
Hot Chocolate			
Mocha with Marshmallows		1.00	2.00
Black Coffee			
Freshly Brewed Black Coffee		2.00	2.50
Vanilla Cinnamon Available .20			
ICED DRINKS		12oz	16oz
Iced Americano			
12oz - 2 shots of espresso and Purified Water served over Ice		2.00	3.00
16oz - 3 shots of espresso with Purified Water served over Ice			
Iced Latte			
Hot Choice of Syrup		3.00	4.00
Espresso Shot			
Cold Milk			
Served over Ice			
Iced Caramel Macchiato			
Vanilla Syrup		3.00	4.00
Espresso Shot			
Cold Milk			
Iced Mocha/White Mocha			
Vanilla Syrup		3.00	4.00
Espresso Shot			
Cold Milk			
Served over Ice			
Iced Cappuccino			
Hot Choice of Syrup		3.00	4.00
Espresso Shot			
Cold Milk			
Served over Ice			
Iced Mocha/White Mocha			
Vanilla Syrup		3.00	4.00
Espresso Shot			
Cold Milk			
Served over Ice			
Iced Cappuccino			
Hot Choice of Syrup		3.00	4.00
Espresso Shot			
Cold Milk			
Served over Ice			
Iced Mocha/White Mocha			
Vanilla Syrup		3.00	4.00
Espresso Shot			
Cold Milk			
Served over Ice			
Iced Cappuccino			
Hot Choice of Syrup		3.00	4.00
Espresso Shot			
Cold Milk			
Served over Ice			
Iced Mocha/White Mocha			
Vanilla Syrup		3.00	4.00
Espresso Shot			
Cold Milk			
Served over Ice			
Iced Cappuccino			
Hot Choice of Syrup		3.00	4.00
Espresso Shot			
Cold Milk			
Served over Ice			
Iced Mocha/White Mocha			
Vanilla Syrup		3.00	4.00
Espresso Shot			
Cold Milk			
Served over Ice			
Iced Cappuccino			
Hot Choice of Syrup		3.00	4.00
Espresso Shot			
Cold Milk			
Served over Ice			
Iced Mocha/White Mocha			
Vanilla Syrup		3.00	4.00
Espresso Shot			
Cold Milk			
Served over Ice			
Iced Cappuccino			
Hot Choice of Syrup		3.00	4.00
Espresso Shot			
Cold Milk			
Served over Ice			
Iced Mocha/White Mocha			
Vanilla Syrup		3.00	4.00
Espresso Shot			
Cold Milk			
Served over Ice			
Iced Cappuccino			
Hot Choice of Syrup		3.00	4.00
Espresso Shot			
Cold Milk			
Served over Ice			
Iced Mocha/White Mocha			
Vanilla Syrup		3.00	4.00
Espresso Shot			
Cold Milk			
Served over Ice			
Iced Cappuccino			
Hot Choice of Syrup		3.00	4.00
Espresso Shot			
Cold Milk			
Served over Ice			
Iced Mocha/White Mocha			
Vanilla Syrup		3.00	4.00
Espresso Shot			
Cold Milk			
Served over Ice			
Iced Cappuccino			
Hot Choice of Syrup		3.00	4.00
Espresso Shot			
Cold Milk			
Served over Ice			
Iced Mocha/White Mocha			
Vanilla Syrup		3.00	4.00
Espresso Shot			
Cold Milk			
Served over Ice			
Iced Cappuccino			
Hot Choice of Syrup		3.00	4.00
Espresso Shot			
Cold Milk			
Served over Ice			
Iced Mocha/White Mocha			
Vanilla Syrup		3.00	4.00
Espresso Shot			
Cold Milk			
Served over Ice			
Iced Cappuccino			
Hot Choice of Syrup		3.00	4.00
Espresso Shot			
Cold Milk			
Served over Ice			
Iced Mocha/White Mocha			
Vanilla Syrup		3.00	4.00
Espresso Shot			
Cold Milk			
Served over Ice			
Iced Cappuccino			
Hot Choice of Syrup		3.00	4.00
Espresso Shot			
Cold Milk			
Served over Ice			
Iced Mocha/White Mocha			
Vanilla Syrup		3.00	4.00
Espresso Shot			
Cold Milk			
Served over Ice			
Iced Cappuccino			
Hot Choice of Syrup		3.00	4.00
Espresso Shot			
Cold Milk			
Served over Ice			
Iced Mocha/White Mocha			
Vanilla Syrup		3.00	4.00
Espresso Shot			
Cold Milk			
Served over Ice			
Iced Cappuccino			
Hot Choice of Syrup		3.00	4.00
Espresso Shot			
Cold Milk			
Served over Ice			
Iced Mocha/White Mocha			
Vanilla Syrup		3.00	4.00
Espresso Shot			
Cold Milk			
Served over Ice			
Iced Cappuccino			
Hot Choice of Syrup		3.00	4.00
Espresso Shot			
Cold Milk			
Served over Ice			
Iced Mocha/White Mocha			
Vanilla Syrup		3.00	4.00
Espresso Shot			
Cold Milk			
Served over Ice			
Iced Cappuccino			
Hot Choice of Syrup		3.00	4.00
Espresso Shot			
Cold Milk			
Served over Ice			
Iced Mocha/White Mocha			
Vanilla Syrup		3.00	4.00
Espresso Shot			
Cold Milk			
Served over Ice			
Iced Cappuccino			
Hot Choice of Syrup		3.00	4.00
Espresso Shot			
Cold Milk			
Served over Ice			
Iced Mocha/White Mocha			
Vanilla Syrup		3.00	4.00
Espresso Shot			
Cold Milk			
Served over Ice			
Iced Cappuccino			
Hot Choice of Syrup		3.00	4.00
Espresso Shot			
Cold Milk			
Served over Ice			
Iced Mocha/White Mocha			
Vanilla Syrup		3.00	4.00
Espresso Shot			
Cold Milk			
Served over Ice			
Iced Cappuccino			
Hot Choice of Syrup		3.00	4.00
Espresso Shot			
Cold Milk			
Served over Ice			
Iced Mocha/White Mocha			
Vanilla Syrup		3.00	4.00
Espresso Shot			
Cold Milk			
Served over Ice			
Iced Cappuccino			
Hot Choice of Syrup		3.00	4.00
Espresso Shot			
Cold Milk			
Served over Ice			
Iced Mocha/White Mocha			
Vanilla Syrup		3.00	4.00
Espresso Shot			
Cold Milk			
Served over Ice			
Iced Cappuccino			
Hot Choice of Syrup		3.00	4.00
Espresso Shot			
Cold Milk			
Served over Ice			
Iced Mocha/White Mocha			
Vanilla Syrup		3.00	4.00
Espresso Shot			
Cold Milk			
Served over Ice			
Iced Cappuccino			
Hot Choice of Syrup		3.00	4.00
Espresso Shot			
Cold Milk			
Served over Ice			
Iced Mocha/White Mocha			
Vanilla Syrup		3.00	4.00
Espresso Shot			
Cold Milk			
Served over Ice			
Iced Cappuccino			
Hot Choice of Syrup		3.00	4.00
Espresso Shot			
Cold Milk			
Served over Ice			
Iced Mocha/White Mocha			
Vanilla Syrup		3.00	4.00
Espresso Shot			
Cold Milk			
Served over Ice			
Iced Cappuccino			
Hot Choice of Syrup		3.00	4.00
Espresso Shot			
Cold Milk			
Served over Ice			
Iced Mocha/White Mocha			
Vanilla Syrup		3.00	4.00
Espresso Shot			
Cold Milk			
Served over Ice			
Iced Cappuccino			
Hot Choice of Syrup		3.00	4.00
Espresso Shot			
Cold Milk			
Served over Ice			
Iced Mocha/White Mocha			
Vanilla Syrup		3.00	4.00
Espresso Shot			
Cold Milk			
Served over Ice			
Iced Cappuccino			
Hot Choice of Syrup		3.00	4.00
Espresso Shot			
Cold Milk			
Served over Ice			
Iced Mocha/White Mocha			
Vanilla Syrup		3.00	4.00
Espresso Shot			
Cold Milk			
Served over Ice			
Iced Cappuccino			
Hot Choice of Syrup		3.00	4.00
Espresso Shot			
Cold Milk			
Served over Ice			
Iced Mocha/White Mocha			
Vanilla Syrup		3.00	4.00
Espresso Shot			
Cold Milk			
Served over Ice			
Iced Cappuccino			
Hot Choice of Syrup		3.00	4.00
Espresso Shot			
Cold Milk			
Served over Ice			
Iced Mocha/White Mocha			
Vanilla Syrup		3.00	4.00
Espresso Shot			
Cold Milk			
Served over Ice			
Iced Cappuccino			
Hot Choice of Syrup		3.00	4.00
Espresso Shot			
Cold Milk			
Served over Ice			
Iced Mocha/White Mocha			
Vanilla Syrup		3.00	4.00
Espresso Shot			
Cold Milk			
Served over Ice			
Iced Cappuccino			
Hot Choice of Syrup		3.00	4.00
Espresso Shot			
Cold Milk			
Served over Ice			
Iced Mocha/White Mocha			
Vanilla Syrup		3.00	4.00
Espresso Shot			
Cold Milk			
Served over Ice			
Iced Cappuccino			
Hot Choice of Syrup		3.00	4.00
Espresso Shot			
Cold Milk			
Served over Ice			
Iced Mocha/White Mocha			
Vanilla Syrup		3.00	4.00
Espresso Shot			
Cold Milk			
Served over Ice			
Iced Cappuccino			
Hot Choice of Syrup		3.00	4.00
Espresso Shot			
Cold Milk			
Served over Ice			
Iced Mocha/White Mocha			
Vanilla Syrup		3.00	4.00
Espresso Shot			
Cold Milk			
Served over Ice			
Iced Cappuccino			
Hot Choice of Syrup		3.00	4.00
Espresso Shot			
Cold Milk			

### *Upcoming Kansas Events*

May 2024	State Convention	Beta Epsilon / Basehor
June 2025	Sunflower Summit 4	Alpha Gamma/ Johnson Co.
May 2026	State Convention	Upsilon / El Dorado
June 2027	Sunflower Summit 5	Iota / Miami County
May 2028	State Convention	Rho / Wichita
June 2029	Sunflower Summit 6	Alpha Alpha / Mission
May 2030	State Convention	Beta / Atchison
June 2031	Sunflower Summit 7	Sigma / Ottawa
May 2032	State Convention	Alpha Rho / Hutchison
June 2033	Sunflower Summit 8	Theta / Kansas City
May 2034	State Convention	Alpha Gamma / Johnson County

### **Make a Circle and Sing “The Lamp of Alpha Delta Kappa”**

To Alpha Delta Kappa  
We pledge our loyalty:  
To sisters who are always true,  
We’ll ever faithful be.

The sacred lamp of learning  
Upon our altar stands  
It’s radiant glow will e’re bestow,  
A light to all the lands.



*Thank you, Capitol Federal, for the donation of  
boxed crayons.*





The following Sisters sent photos to be included in this publication:

Valerie Nordberg

Linda Johnson-

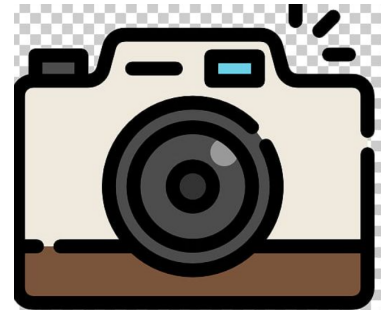
Cheryl Sigel

Brenda Wigger

Tana Snyder

Susan Neverve

Melissa Phelps



Color Your World 

*Hugs, Marla*

## Main Floor- Hutchinson Career & Technology HC&T



Thank you, HCTEA for your support by offering your wonderful facility!

